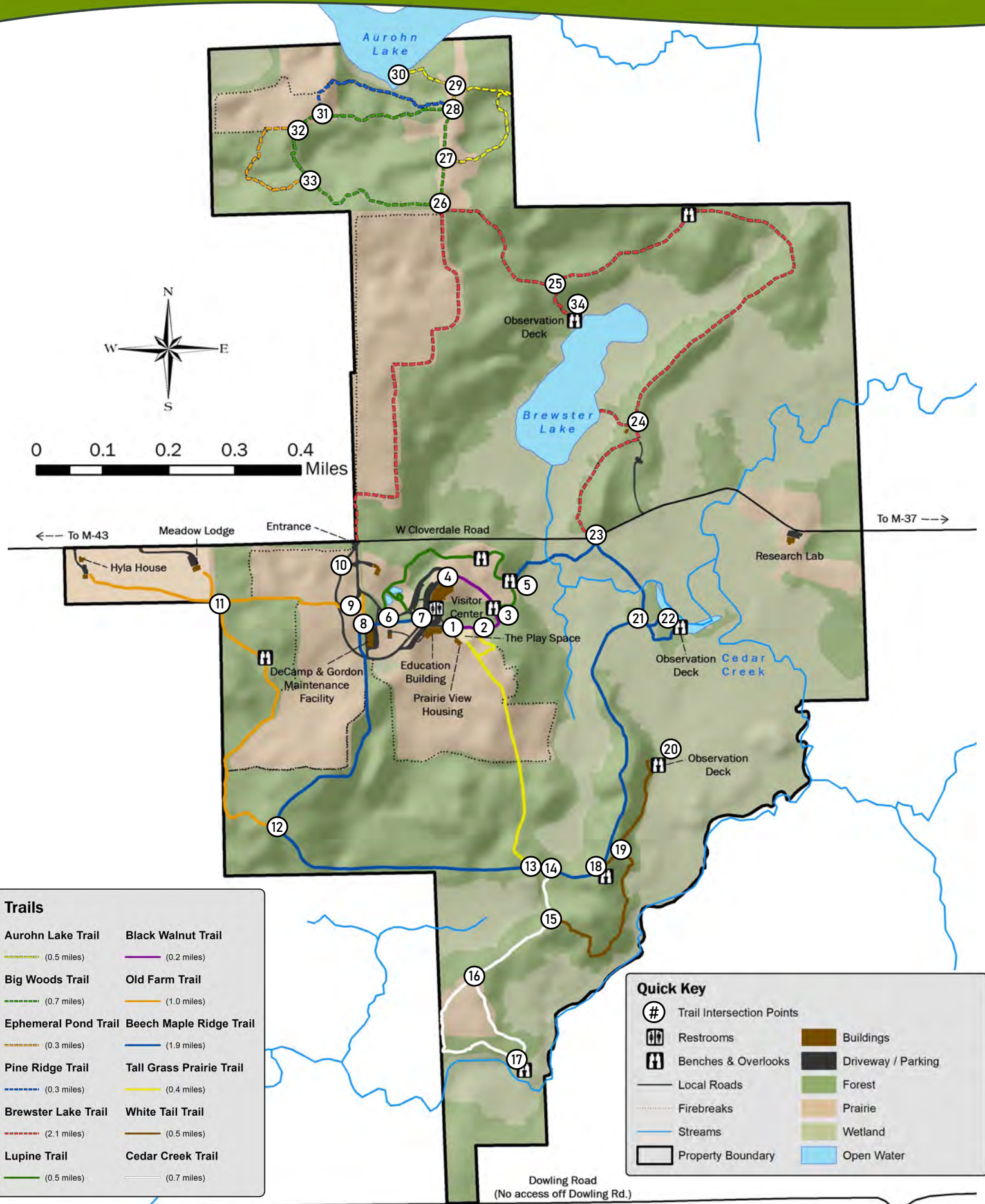


Trail Guide



Trails	
Aurohn Lake Trail ----- (0.5 miles)	Black Walnut Trail ----- (0.2 miles)
Big Woods Trail ----- (0.7 miles)	Old Farm Trail ----- (1.0 miles)
Ephemeral Pond Trail ----- (0.3 miles)	Beech Maple Ridge Trail ----- (1.9 miles)
Pine Ridge Trail ----- (0.3 miles)	Tall Grass Prairie Trail ----- (0.4 miles)
Brewster Lake Trail ----- (2.1 miles)	White Tail Trail ----- (0.5 miles)
Lupine Trail ----- (0.5 miles)	Cedar Creek Trail ----- (0.7 miles)

Quick Key	
#	Trail Intersection Points
♿	Restrooms
♿	Benches & Overlooks
—	Local Roads
---	Firebreaks
—	Streams
▭	Property Boundary
▭	Buildings
▭	Driveway / Parking
▭	Forest
▭	Prairie
▭	Wetland
▭	Open Water

Dowling Road
(No access off Dowling Rd.)

Main Campus Area Map



Quick Key	
	Restrooms
	Benches & Overlooks
	Local Roads
	Streams
	Property Boundary
	Buildings
	Driveway & Parking
	The Play Space
	Forest
	Prairie
	Wetland
	Open Water



Printed on recycled paper.
Please recycle or return.

Trail Usage & Regulations

- The trails are open from dawn to dusk.
- There is no fee to use the trails.
- Trail markers are indicated by color listed on the map. For example, the Brewster Lake Trail has red markers.
- Firebreaks are symbolized on the map but not marked out on the trails. Firebreaks are not maintained as trails.
- Pierce Cedar Creek Institute grounds and buildings are alcohol and smoke-free.
- Dogs must remain leashed at all times.
- A pet waste station is located at the head of the Tall Grass Prairie Trail. Please clean up after pets.
- Motorized vehicles, bicycles, snowmobiles, watercraft, and horses are prohibited.
- Fishing, hunting, camping, trapping, and plant collecting are prohibited.

**Restroom facilities are available in the Visitor Center dawn to dusk.
Entrance is on the south side.**